



Easter Menu

EASTER BRUNCH (SERVES 8-10) \$98.00

QUICHE (9 INCH) – SELECT 2

Our selections include:

Lorraine, Three Cheese, Ham & Cheese, Broccoli Cheese, Tomato Basil or Spinach Feta

GOLDEN AIRE POTATOES (3 POUNDS)

HONEY PIT HAM WITH PINEAPPLE GLAZE, SLICED (4 POUNDS)

FRESH FRUIT BOWL (4 POUNDS)

MINI BUTTER CROSSANTS (1 DOZEN)

DESSERT – SELECT 1

Choose from our fresh-baked selections:

Petite Pastry Tray which includes an assortment of Mini Cream Puffs, Mini Éclairs, Mini Cheesecakes, Mini Danish and Brownies or Carrot Cake 8-inch



EASTER BRUNCH ALA CARTE

QUICHE (9 INCH)

\$9.99 each

Our selections include:

Lorraine, Three Cheese, Ham & Cheese, Broccoli Cheese, Tomato Basil or Spinach Feta

HONEY PIT HAM WITH PINEAPPLE GLAZE, SLICED

\$5.99 lb.

GOLDEN AIRE POTATOES

\$4.99 lb.

FRESH FRUIT BOWL

\$7.99 lb.



As we are closed on Easter Sunday, brunch will need to be picked up by 9 p.m. on Saturday. Forty-eight hour advance notice is appreciated on all orders.



Easter Menu

EASTER DINNER (SERVES 8-10) \$118.00

PINEAPPLE GLAZED SPIRAL BONE-IN HAM (7-9 POUND AVERAGE)

DINNER ROLLS (1 DOZEN)

Select one from each grouping:

POTATOES OR RICE (4 POUNDS)

Mashed Potatoes, Golden Aire Potatoes or Rice Pilaf

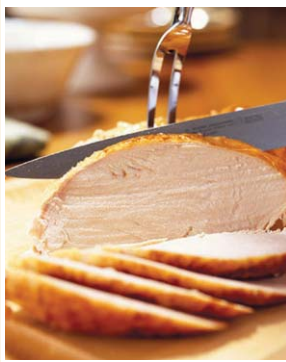
VEGETABLES (3 POUNDS)

Green Beans Amandine or Grilled Asparagus

DESSERT – SELECT 1

Choose from our fresh-baked selections:

Petite Pastry Tray which includes an assortment of Mini Cream Puffs, Mini Éclairs, Mini Cheesecakes, Mini Danish and Brownies or Carrot Cake 8-inch



EASTER DINNER ALA CARTE

PINEAPPLE GLAZED SPIRAL BONE-IN HAM (7-9 POUND AVERAGE)
\$4.99 lb.

RICE PILAF
\$4.99 lb.

GREEN BEANS AMANDINE
\$4.99 lb.

OVEN ROASTED TURKEY BREAST, SLICED
\$9.99 lb.

GRILLED ASPARAGUS
\$5.99 lb.



MASHED POTATOES
\$4.99 lb.

GOLDEN AIRE POTATOES
\$4.99 lb.

As we are closed on Easter Sunday, brunch will need to be picked up by 9 p.m. on Saturday. Forty-eight hour advance notice is appreciated on all orders.